



TECHNICAL RIDER

THEATER **AMSTERDAM**



AUDITORIUM

Our auditorium (4200 m2) is equipped with standard light, sound and video system).

STAGE

basic

The basic version consists of the stage in front of the projection screen. The projection screen is a 180 degrees, curved, 500m2 moveable screen. The use of this projection screen is included in the basic version. In front of the projection screen is a surface for your speakers. This surface is parallel to the projection screen and offer on the widest part of this stage 4 meters from audience to screen for your speakers.

extra

If you require a larger stage, the projection screen can be opened and will give extra room for your event. The surface behind the screen will extent your stage by 22 meter wide and 7 meter in length. You can decide whether the backdrop is black or white. The partly opened screens are still available for projection. It is possible to interchange between the basic and extended stage version during your program. Another option is to extent your stage on the front side. In this case we remove the first rows of the theatre and an extra stage is placed.

upgrade 1 - in front of the screens

For plenary programs with multiple speakers, we advise to build a stage extension into auditorium. The first 6 rows of chairs can be removed for an custom made stage expansion of 14 x 4 metres. A half rounded shape also belongs to the possibilities.

upgrade 2 - behind the screens

It is possible to build an stage expansion behind the screens of 22 x 7 metres. Together with the existing stage, this provides you with a stage of 22 x 10 metres. It is still possible to project content on the half open projection screen if desired. The basic stage version and upgrade 2 can be used occasionally during the program.



AUDITORIUM

STAGE



upgrade 1a - in front of the screens - rectangular (standard)



AUDITORIUM

STAGE



upgrade 1b - in front of the screens- semi -circular (hemisphere)



AUDITORIUM

STAGE



upgrade 2- behind the screens



AUDITORIUM

LIGHTS

basis

Lightbox	Roadhog 4
Theatre lighting	Solid CLF Dynamic White Ledpar
Frontlight	12 x high end sola pro 1500
Wash	4 x Robe 300 with tophead
Backlight	2 x high end sola pro 1500
Work light	Exploit tourled

Extra

In consultation with the technical services it is possible to extent this light set.

SOUND

Mixer	DigiCo SD9
-------	------------

Auditorium Seats	Position	Description
Row 1 - 6	Top Centre	6 x Adamson S7 – Line Array
	Voorrand	4 x Adamson S7p – in fills
Row 7 - 18	Top Left	6 x Adamson S10 – Line Array
	Top Left	2 x Adamson S119 – Line Array
	Top Right	6 x Adamson S10 – Line Array
Row 19 - 32	Top Right	2 x Adamson S119 – Line Array
	Top Left	6 x Adamson S10 – Line Array
	Top Right	6 x Adamson S10 – Line Array

Full Room coverage SUB system	Underneath the stands	8 x Adamson E119 sub
----------------------------------	-----------------------	----------------------

Microphones

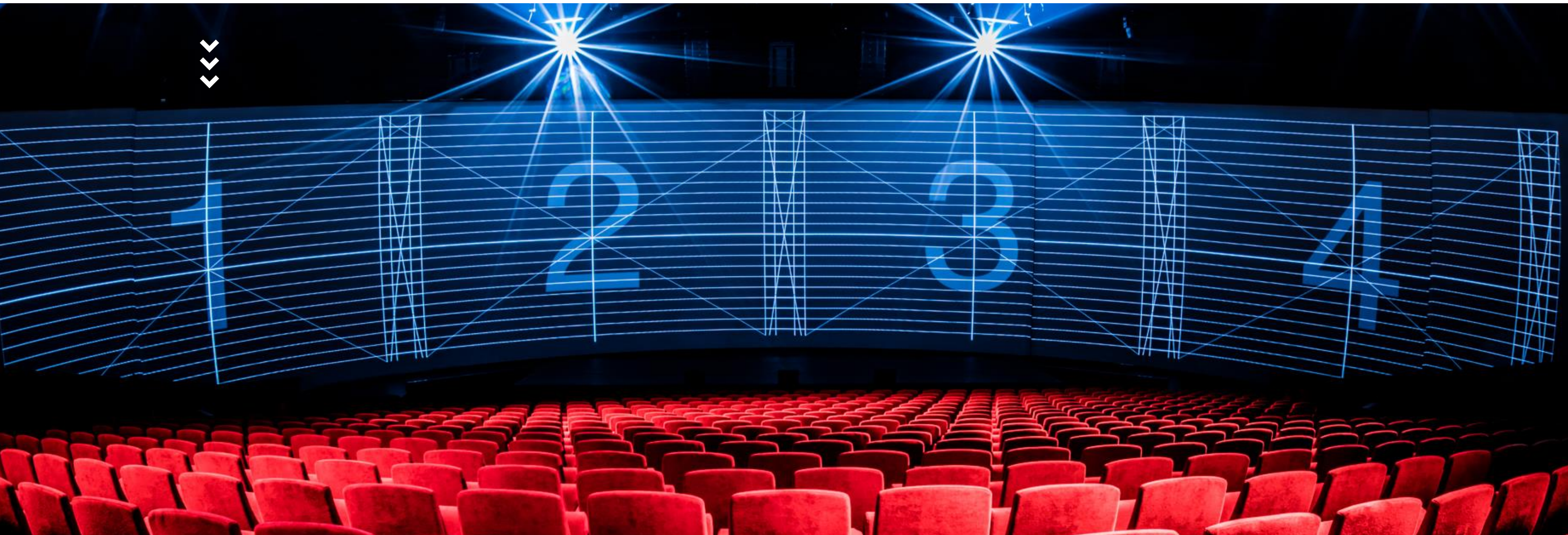
DPA	2 x UR4D beltpacks met DPA4066
Handheld	1 x handheld beta87
Intercom	4 x wireless posts

Extra

On request there is a complete package of microphones and channels available.

AUDITORIUM

VIDEO



Playback system

D3 video server 2 x 4 PRO versie 14.1

Projectors

4 x Panasonic PT-DZ21KEJ2 met 0,9-1,1:1 zoom lens

These projectors (1920X1200) are next to each other with a pixel overlap of 192 pixels

Pixelmap projection screen

7104 x 1200 pixels

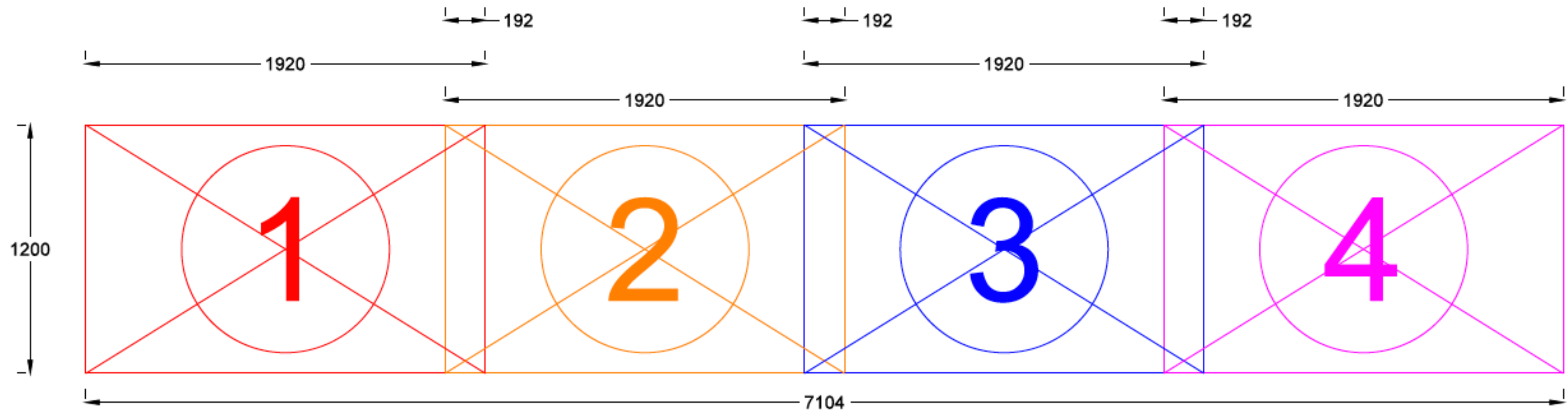
AUDITORIUM

—
VIDEO

Projectors

4 x Panasonic PT-DZ21KEJ2 met 0,9-1,1:1 zoom lens

These projectors (1920X1200) are next to each other with a pixel overlap of 192 pixels



AUDITORIUM

VIDEO

Specs content and inputs

Resolution:

7104x1200 pixels (preference) 3552x600 pixels (low res/Proxy)

Frame Rate:

50 fps (quick animation) 25 fps (common use)

Version Control:

version numbers = automatic replacing
myfile_v1.mov is replaced by myfile_v2.mov

Proxy = Low res programmer file / placeholder. Syntax filename_v1_proxy1.mov
myfile_proxy1.mov is 'proxy 1 (half-resolution) or an asset called myfile.mov'
myfile_proxy2.mov is 'proxy 2 (quarter-resolution) or an asset called myfile.mov'
myfile_proxy3.mov is 'proxy 3 (1/8-resolution) or an asset called myfile.mov'

Frame replacement = automatic replacing part of frame's myfile_v3_frame187.mov replaces
frame 187 onwards in 'myfile_v2.mov'

Filetype

.mov for film with HAP Codec
.jpg or .png (transparent) for images

Delivery specifications

Codec Film:

HAP (download: <https://github.com/Vidvox/hap>)
HAP – for standard quality
HAP-A – for films with transparency
HAP-Q – for high quality

Audio EMBEDDED

44.1kHz / 48kHz 16bit samples, stereo, uncompressed

Live Input SDI Input compatible:

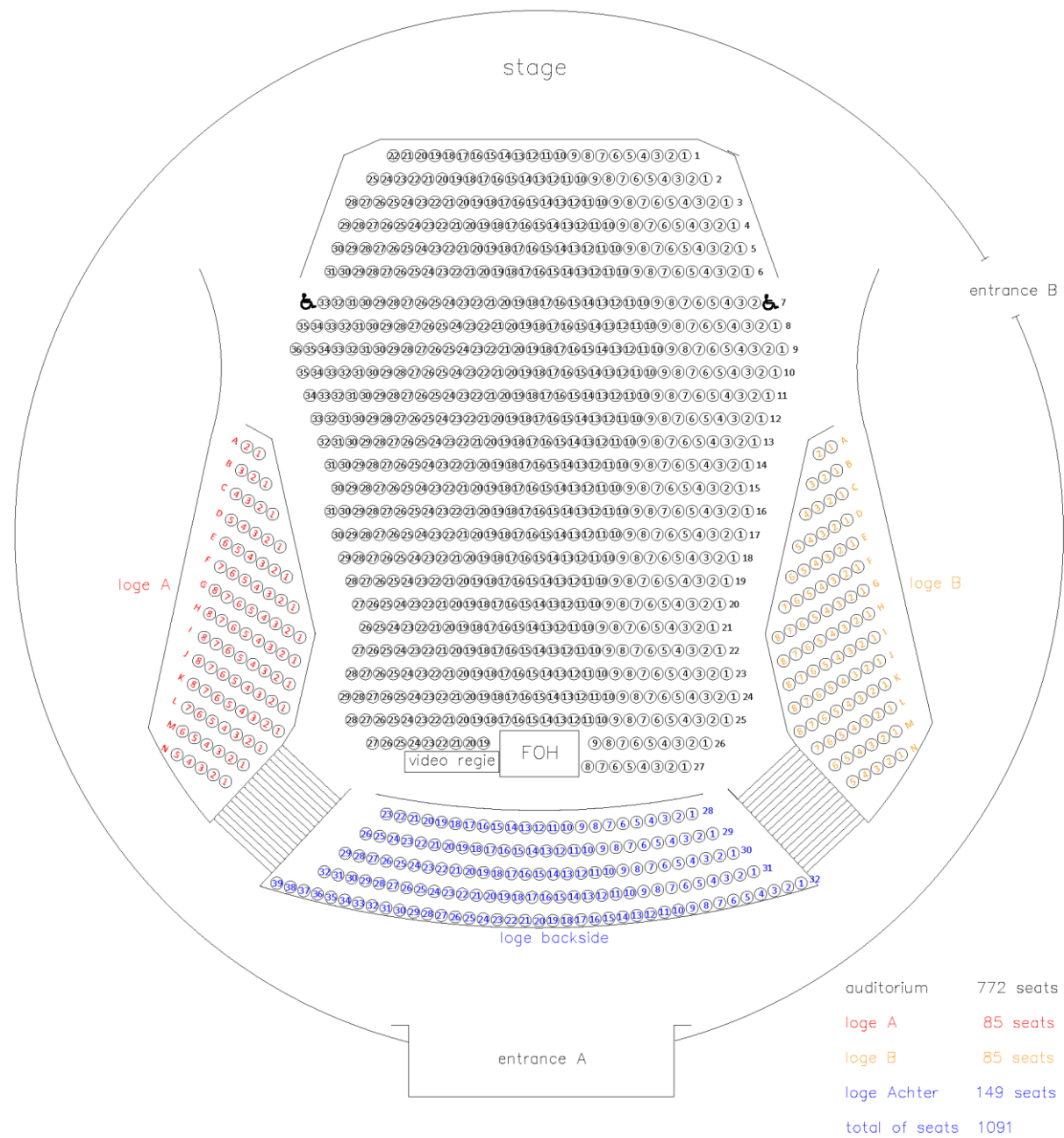
720x486i @ 59.94 Hz NTSC
720x576i @ 50.00 Hz PAL
1280x720p @ 23.976Hz, 24Hz, 25Hz, 29.97Hz, 30Hz, 50Hz, 59.94Hz, 60Hz
1920x1080i @ 47.96Hz, 48Hz, 50Hz, 59.94Hz, 60Hz
1920x1080PsF @ 23.976Hz, 24Hz, 25Hz, 29.97Hz, 30Hz
1920x1080p @ 23.976Hz, 24Hz, 25Hz, 29.97Hz, 30Hz, 47.96Hz, 48Hz, 50Hz, 59.94Hz, 60Hz
2048X1080p @ 23.976Hz, 24Hz, 25Hz, 29.97Hz, 30Hz, 47.96Hz, 48Hz, 50Hz, 59.94Hz, 60Hz
2048X1080i @ 47.96Hz, 48Hz, 50Hz, 59.94Hz, 60Hz
2048x1556PsF @ 14.98Hz, 15Hz, 18.98Hz, 19Hz
4K UHD 3840x2160, 4K P/PsF @ 23, 24, 25, 29, 30fps
4K DCI 4096x2160, 4K P/PsF, @23, 24, 25, 29, 30fp

AUDITORIUM

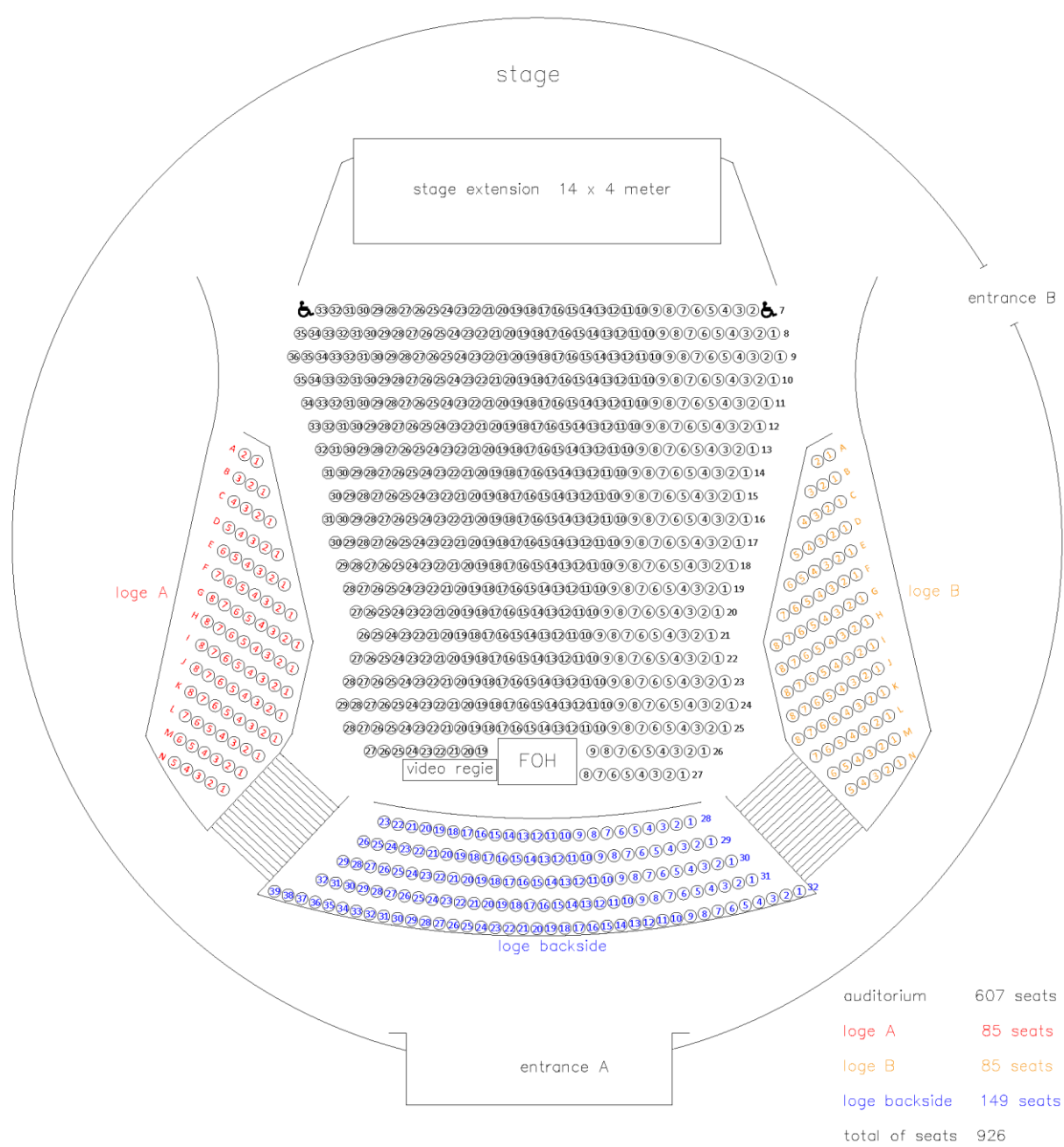
SEATING PLAN

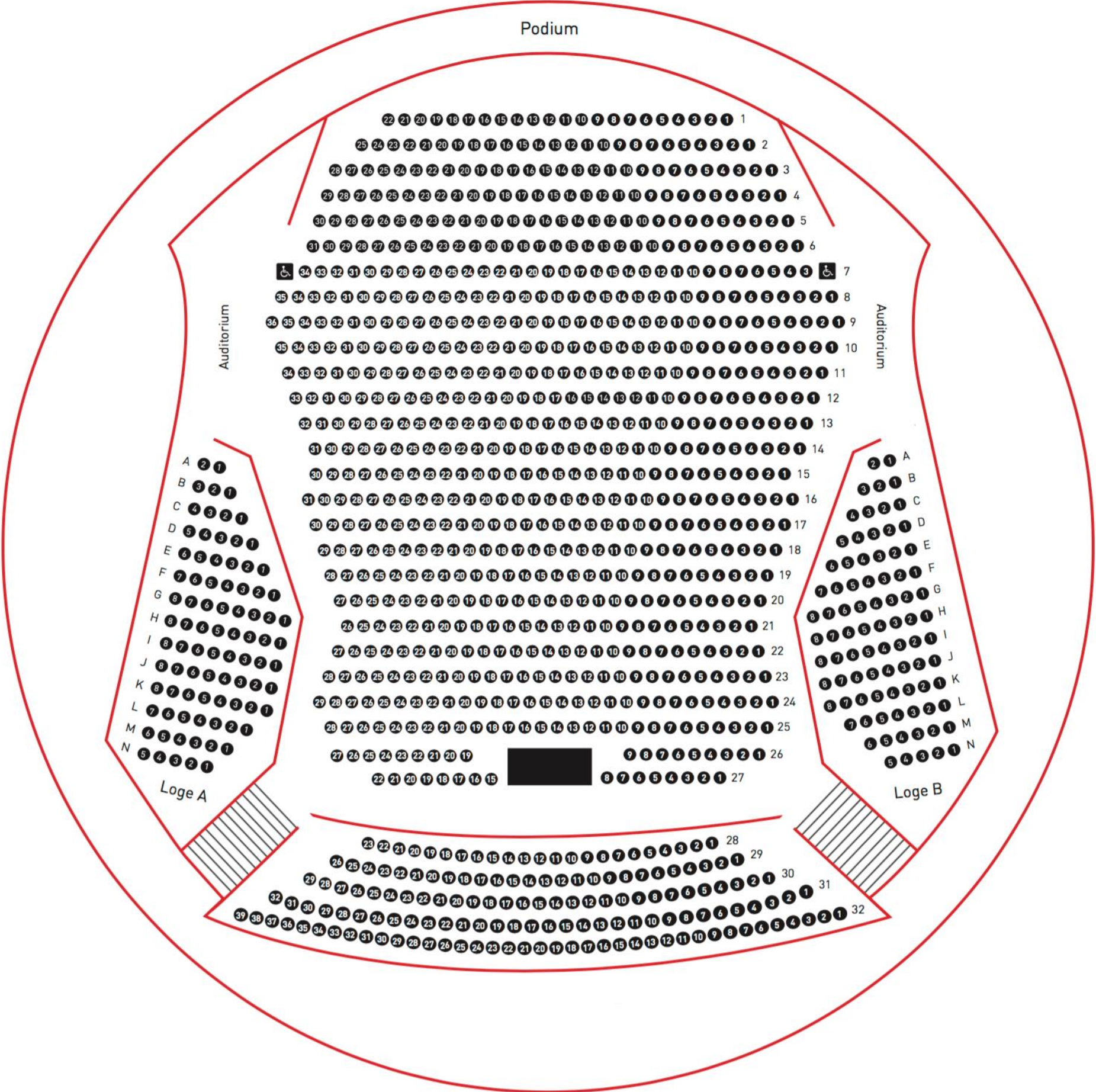


1. Basic Auditorium – Full Seating – standard setting (no extra stage) – 1091 seats



1a. Upgrade – Stage Extension – (14 metres * 4 metres) - 926 seats





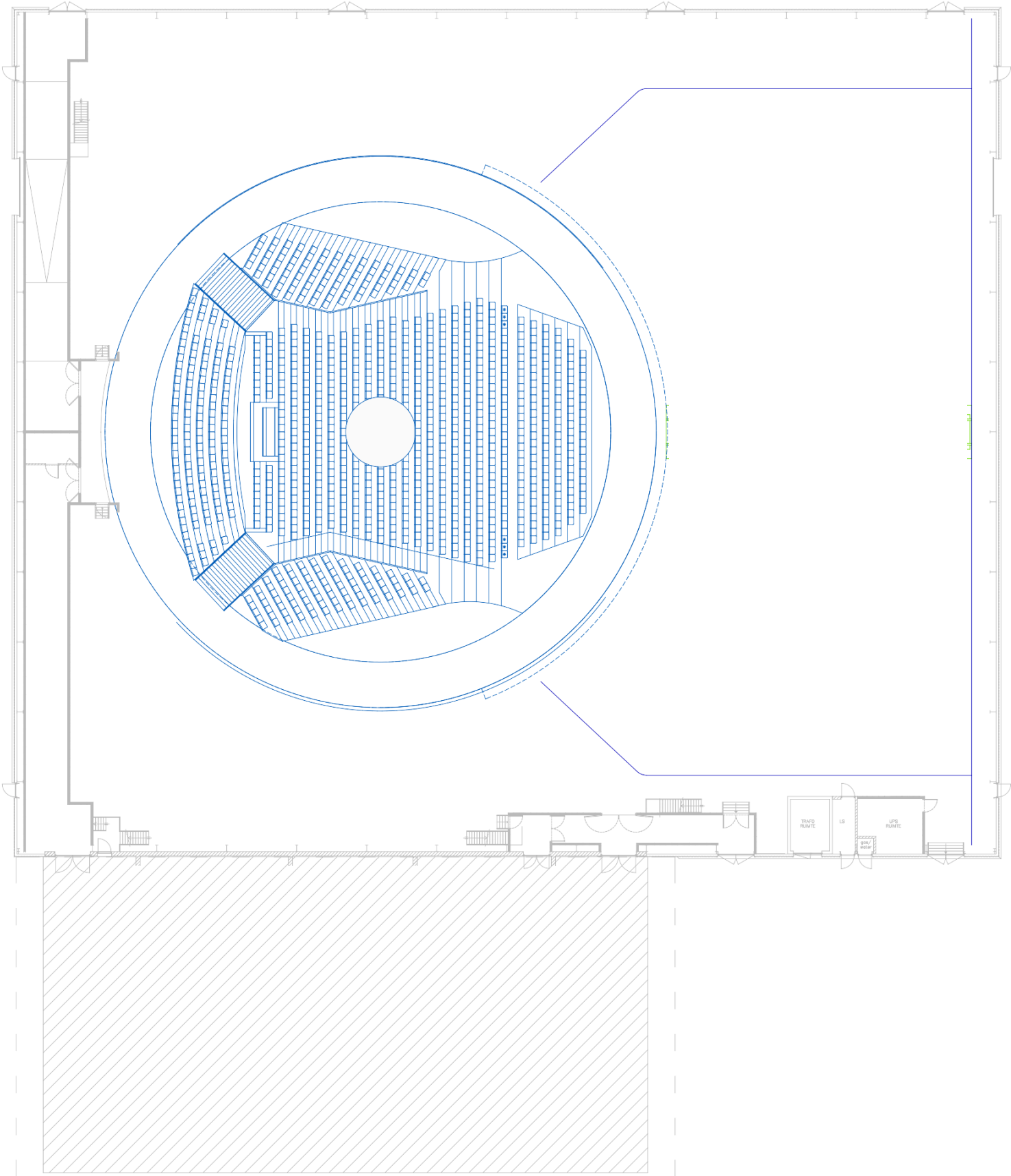
BLACKBOX

New is the possibility to include the backstage area – the Black Box – into your event for an extra event experience. The Black Box can be used for a sit down dinner, festival floor, etc. We would be happy to assist you with the technical interpretation of the Black Box to ensure you will get an unique setting. The Black Box is standardly occupied with atmospheric lightning with the help of 30 times a RBG LED par.



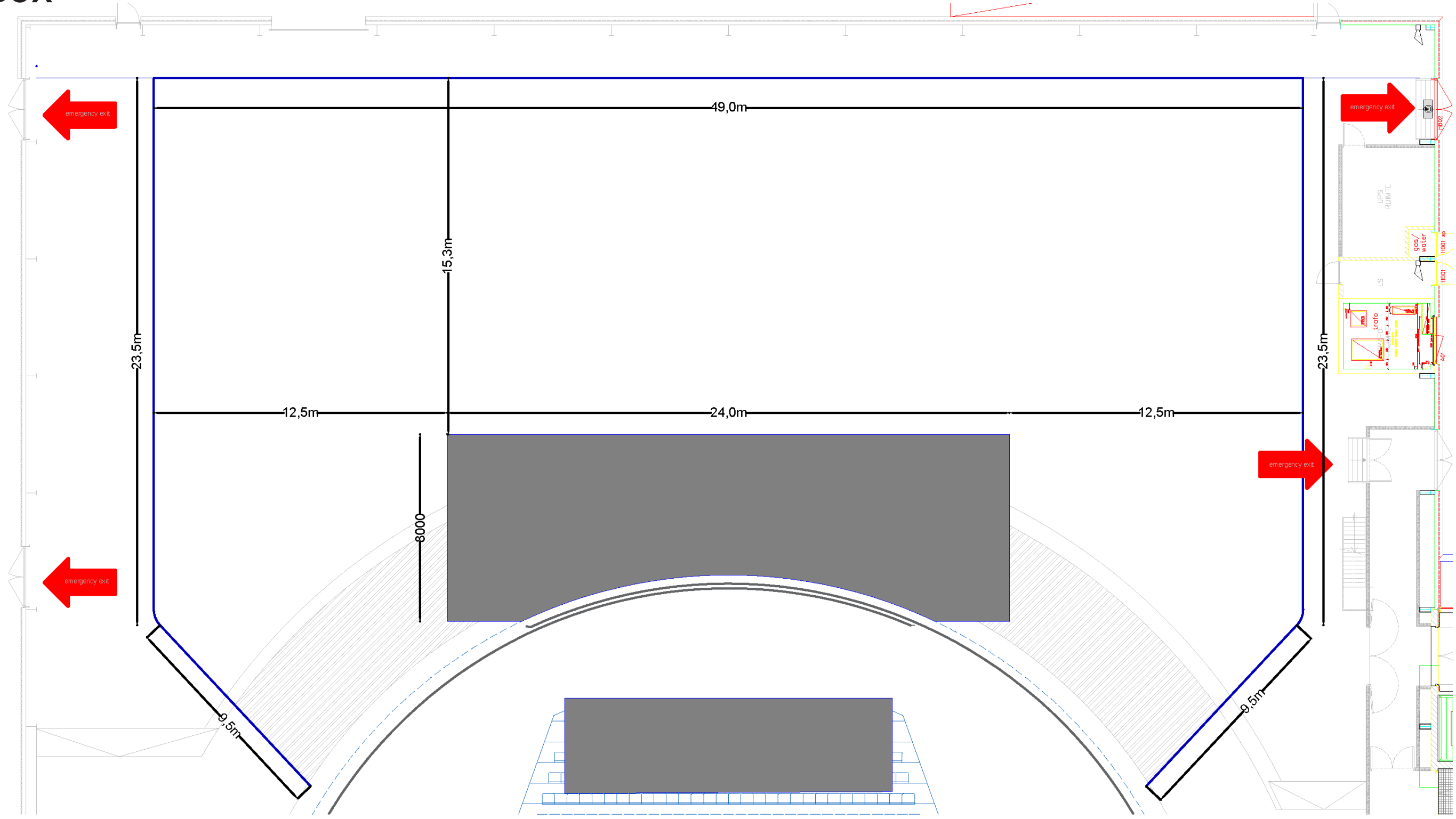
FLOOR PLANS

GROUND PLAN TOTAL



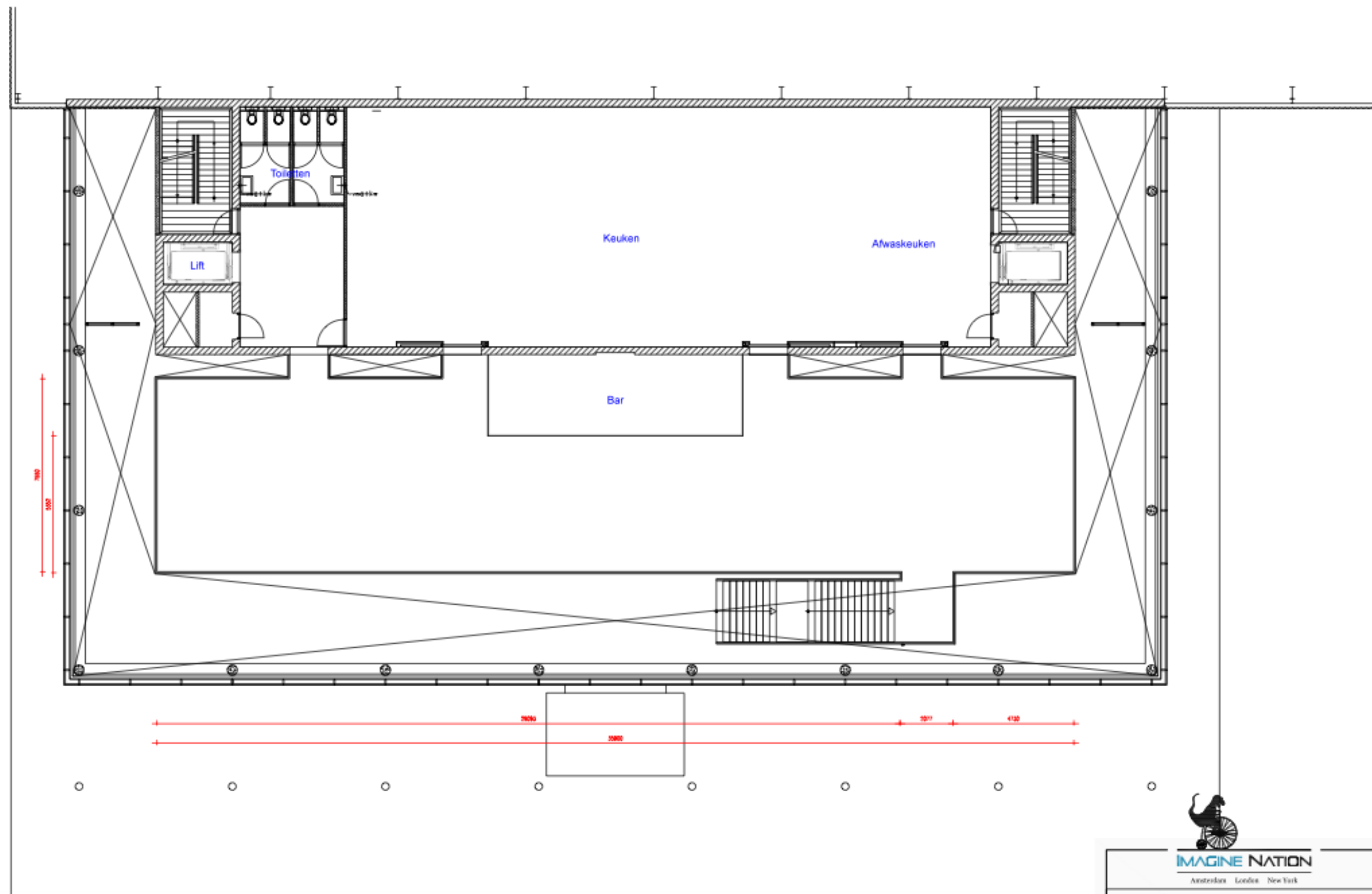


BLACK BOX





VIDE (1e verdieping)



IMAGINE NATION

Amsterdam London New York

THEATER AMSTERDAM

part: Foyer 1e verdieping

subject: Plattegrond

file name: 151021 ta foyer

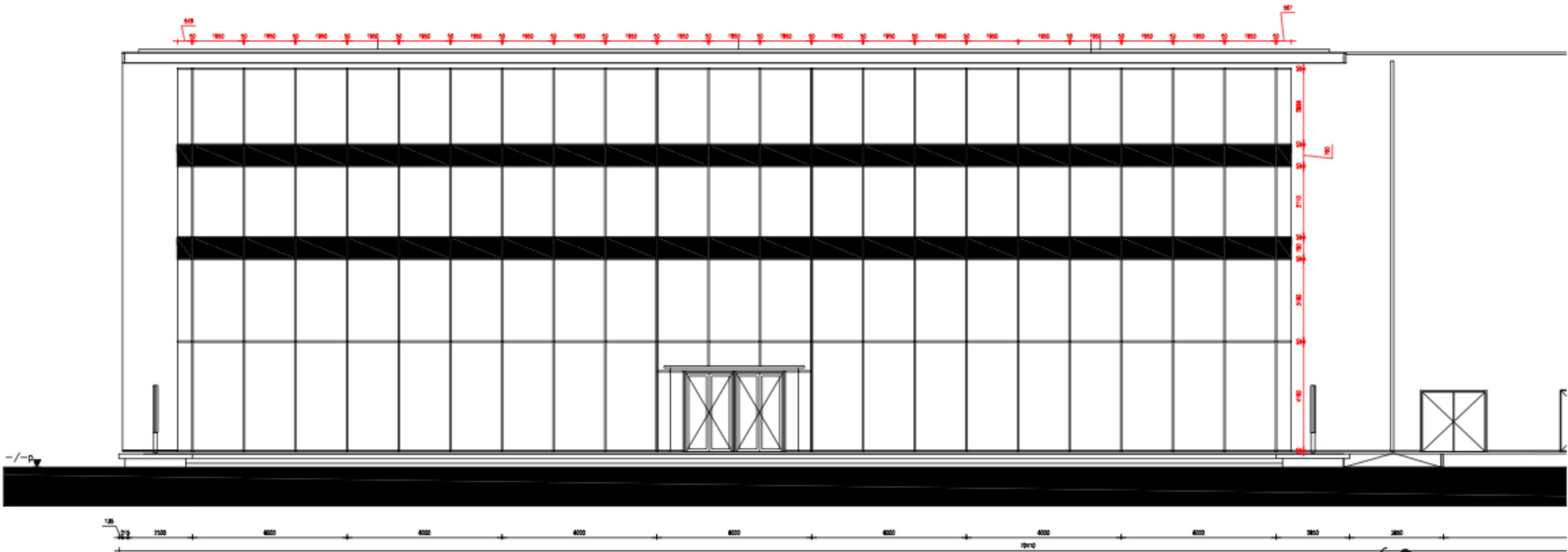
paper size: A3

drawn: LH

date: 21.10.2015

scale: 1:150

GEVEL





IMAGINE NATION
Amsterdam London New York

THEATER AMSTERDAM	
part:	Voorgevel
subject:	Aanzicht
file name:	151021 ta gevel
paper size:	A3
drawn:	LH
date:	21.10.2015
scale:	1:150

INSPIRED? Contact our team!



Martin de Ridder
Technical production manager
mderridder@theateramsterdam.nl
020-70 55 055

Theater Amsterdam
Danzigerkade 5
1013 AP AMSTERDAM
020 70 55 055
events@theateramsterdam.nl

